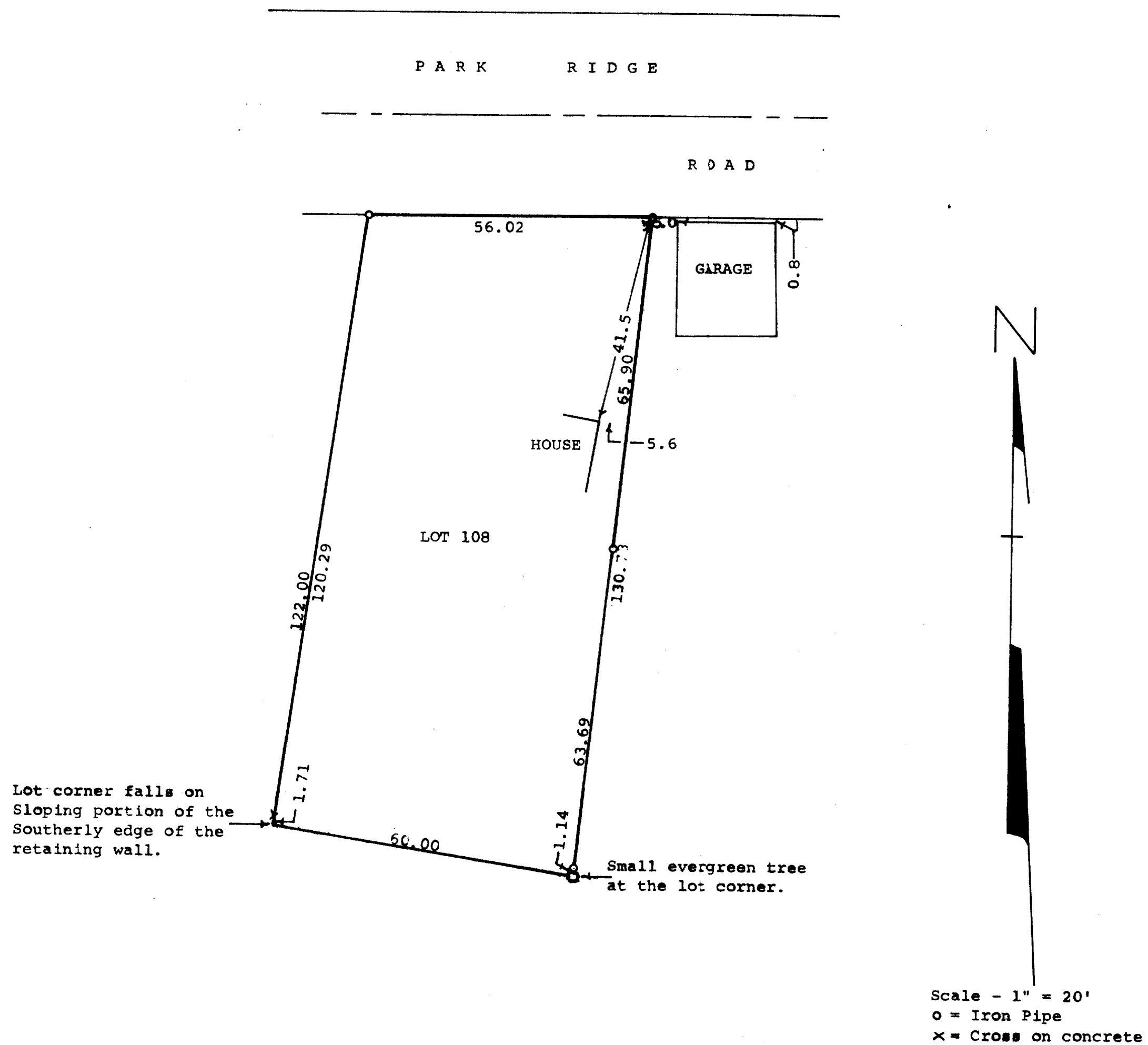


GEORGE T. DUNHAM
SURVEYING & SUBDIVIDING
DELAVER, WISCONSIN



Plat of survey of Lot 108 in the Second Addition to Cedar
Point Park, Village of Williams Bay, Walworth County, Wisconsin.
July 22, 1975

George T. Dunham
George T. Dunham, Surveyor

